



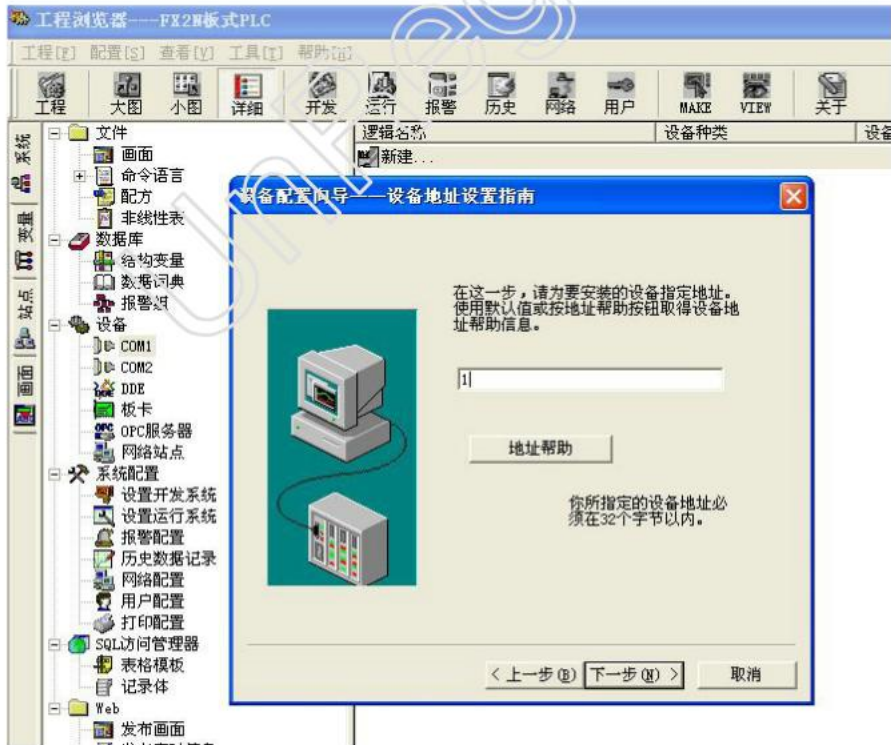
3 COM1



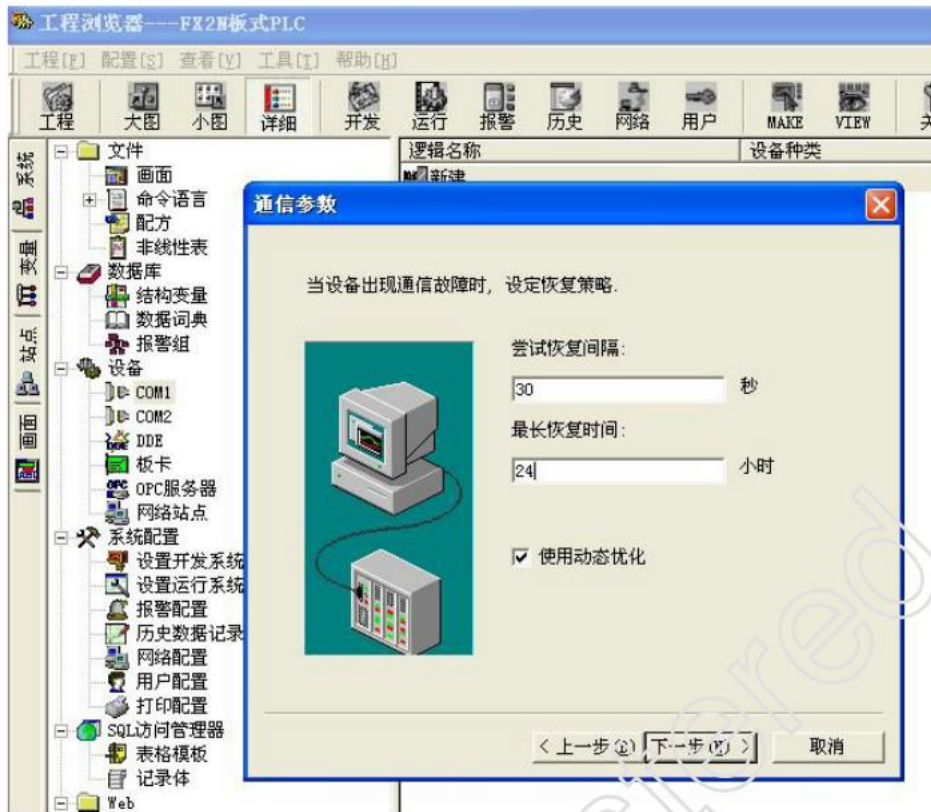
4 PLC

1

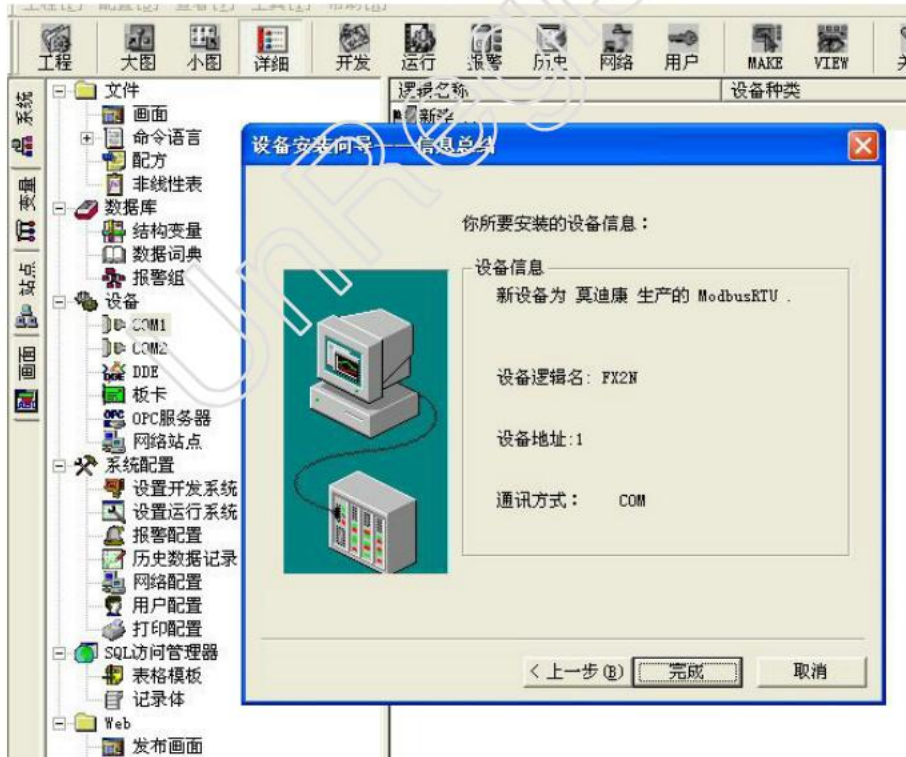
PLC



5

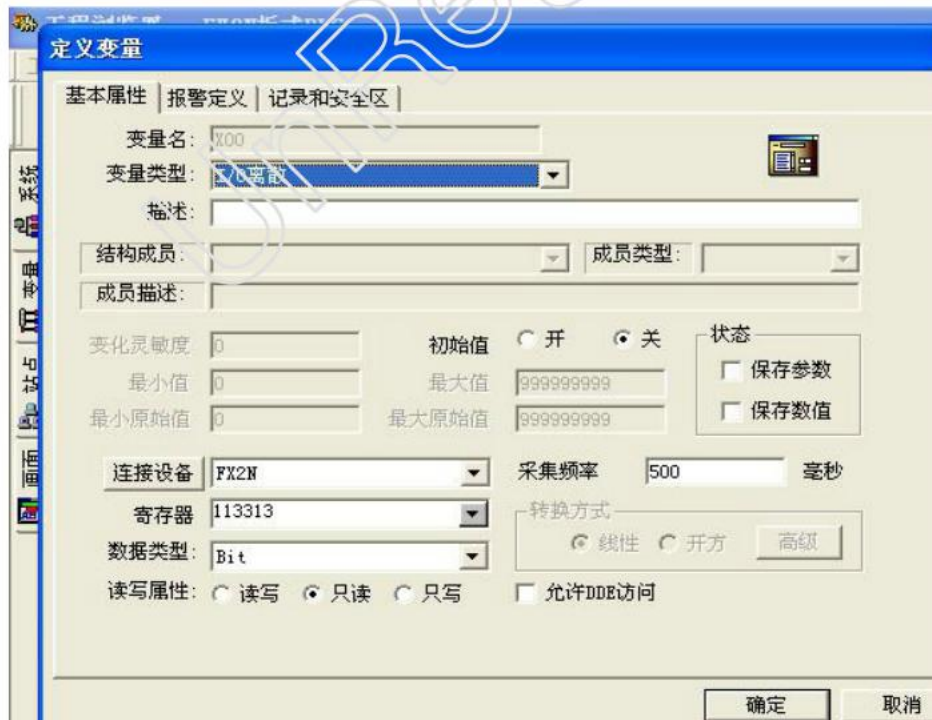
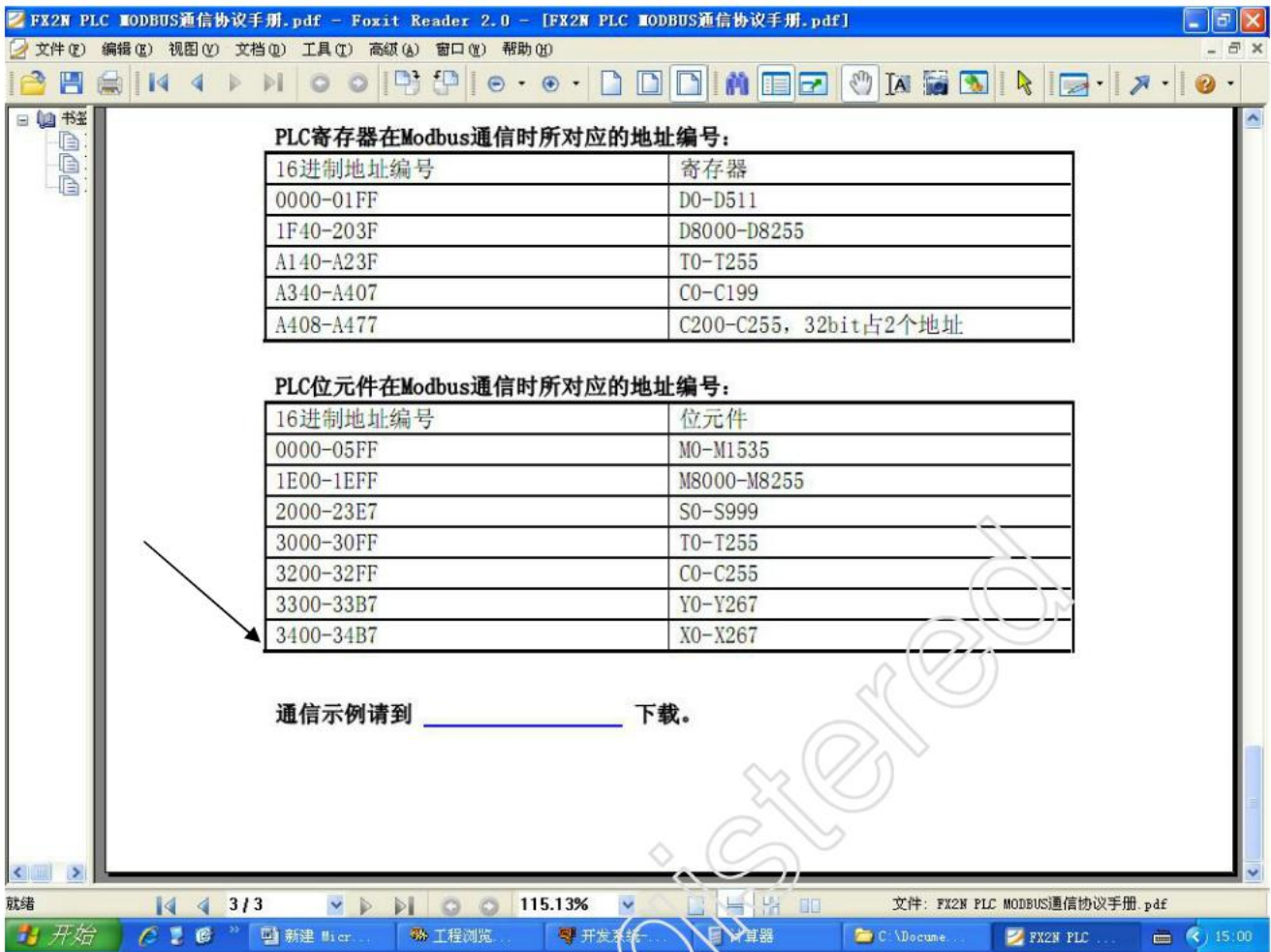


6

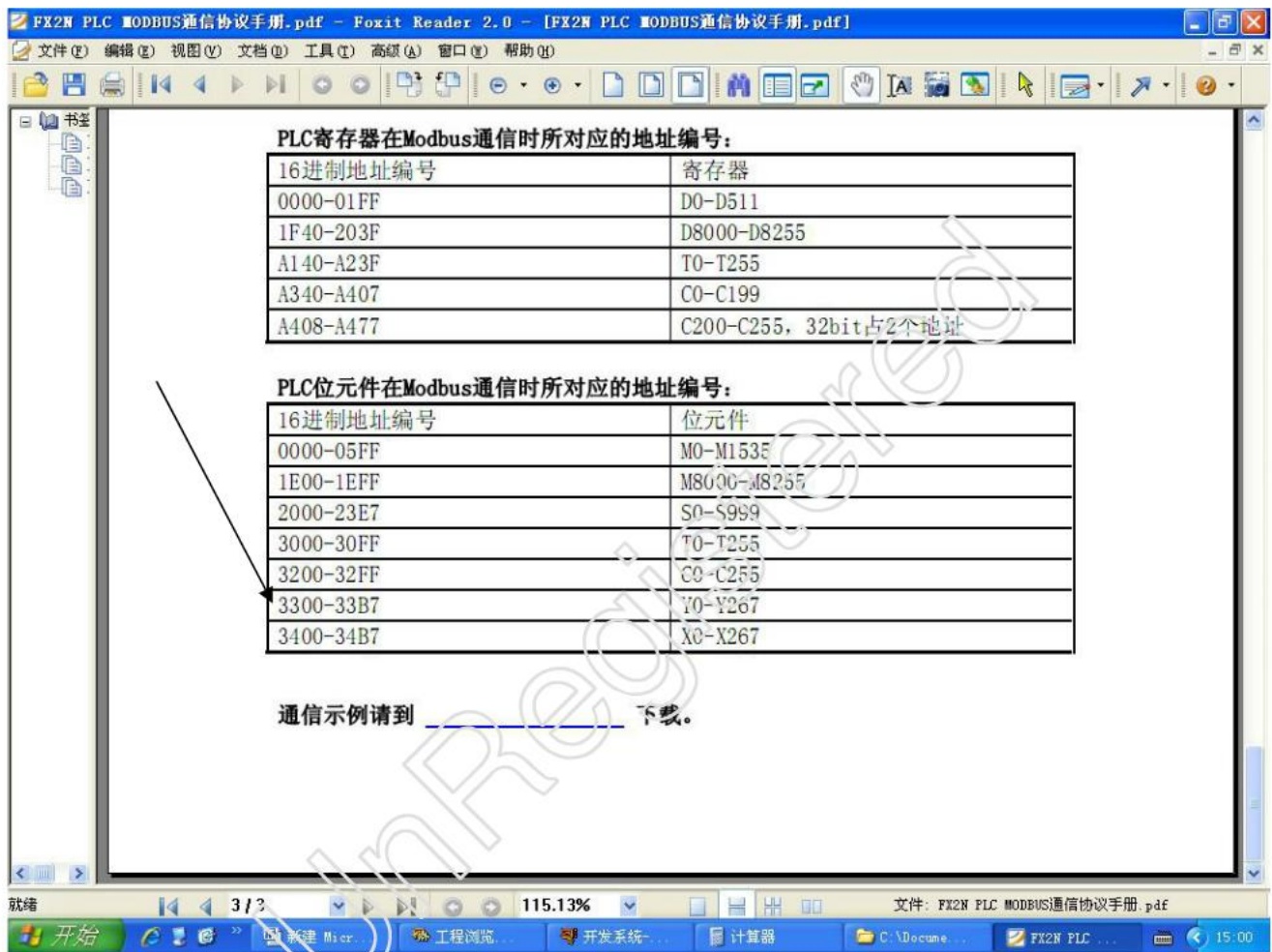


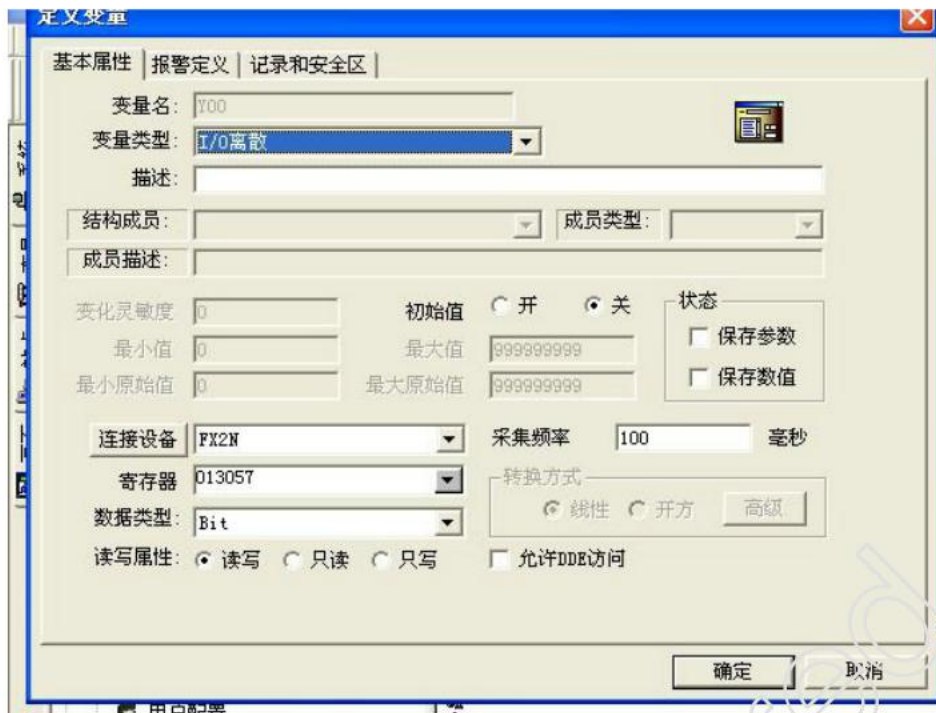
7

	M00,	I/O	01(0	1	PLC	
M0	PLC		0			1
	PLC		1	MODBUS	0	0+1);
	PLC M0			M00		

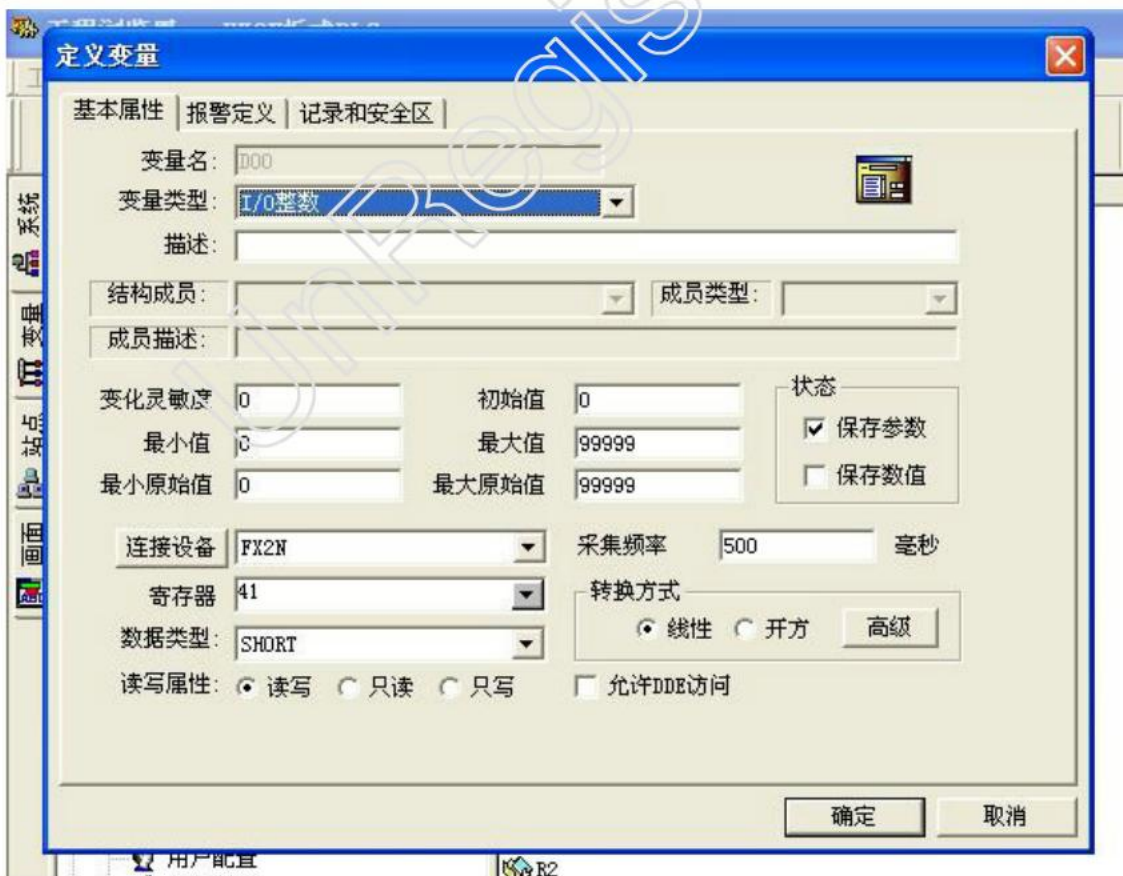
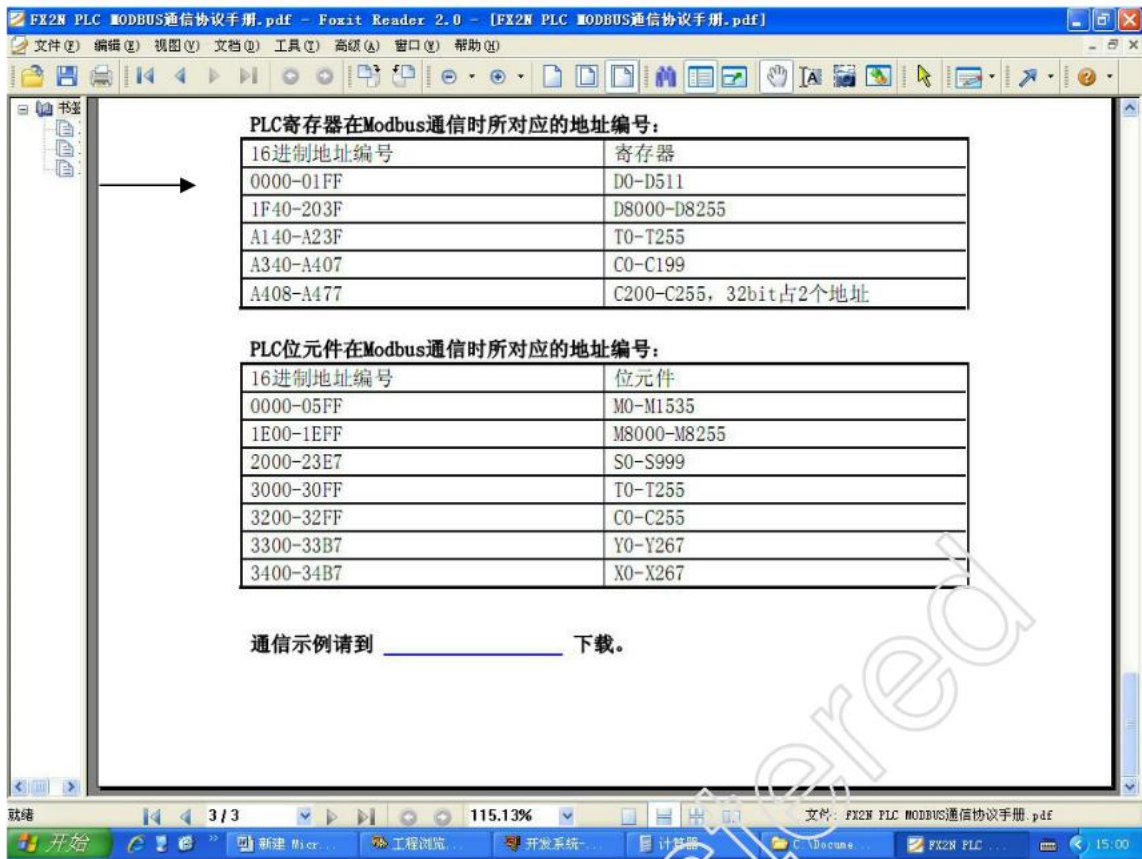


9 Y00, I/O 013313(0 13057 PLC
 Y0,Y0 PLC MODBUS 3300H 3300H 13056
 PLC 0 1
 PLC 1 MODBUS 13056 13056+1
 13057); PLC Y0 Y00





10	D00,	I/O		41(4	16		0	PLC
	16	D0,D0	PLC	MODBUS	0			PLC
	0			1				PLC
1	MODBUS	0		0+1);				PLC D0
	D00		SHORT					



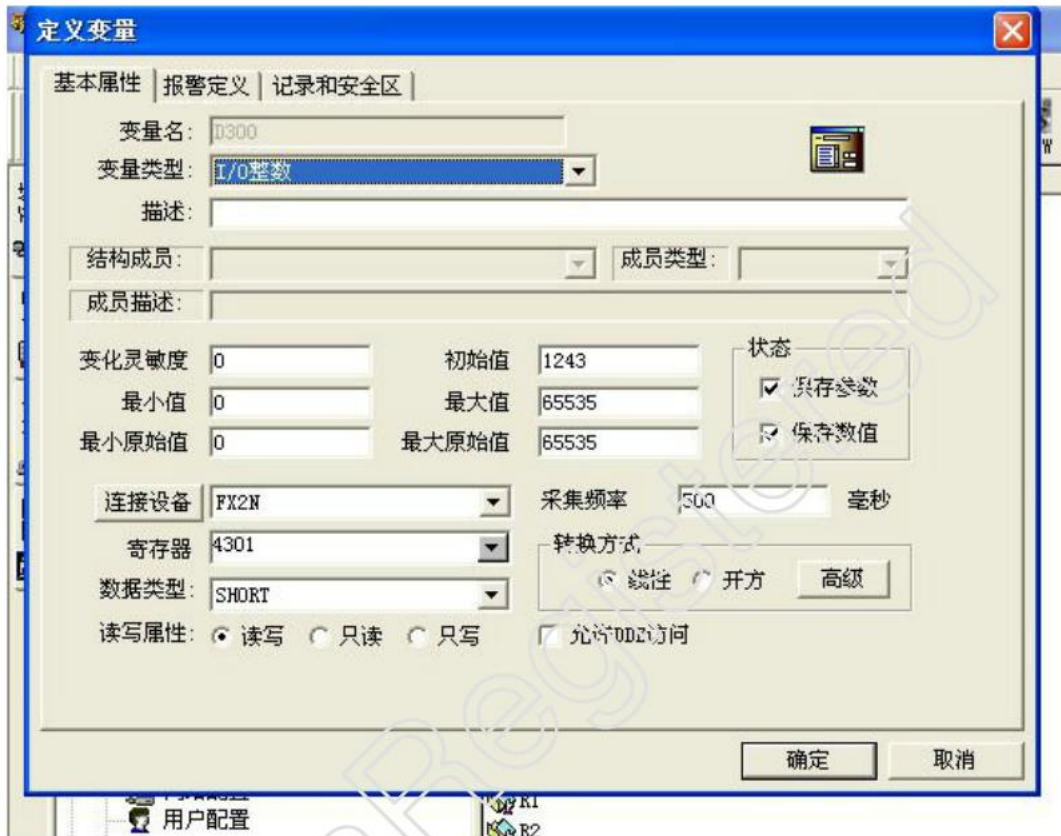
11 D300, I/O 4301(4 16 300

PLC 300 16 D300,D300 PLC MODBUS 300 PLC

0 1

1 MODBUS 300 300+1);

PLC D0 D300 SHORT



12 D301;

13 R11 599 9;



定义变量

基本属性 | 报警定义 | 记录和安全区

变量名: R12

变量类型: 内存实数

描述:

结构成员: 成员类型:

成员描述:

变化灵敏度: 0 初始值: 0 状态: 保存参数

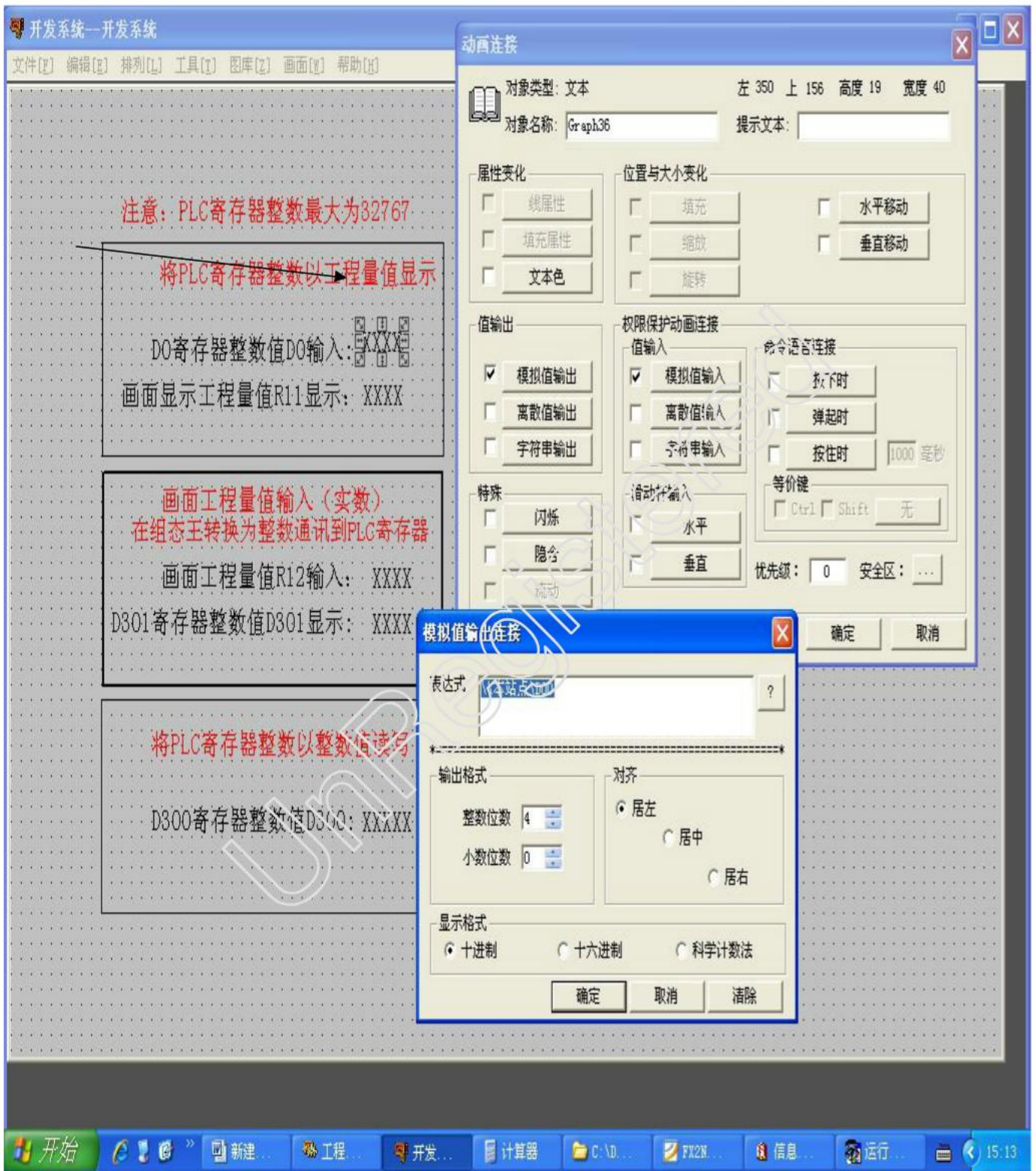
最小值: 0 最大值: 50 保存数值

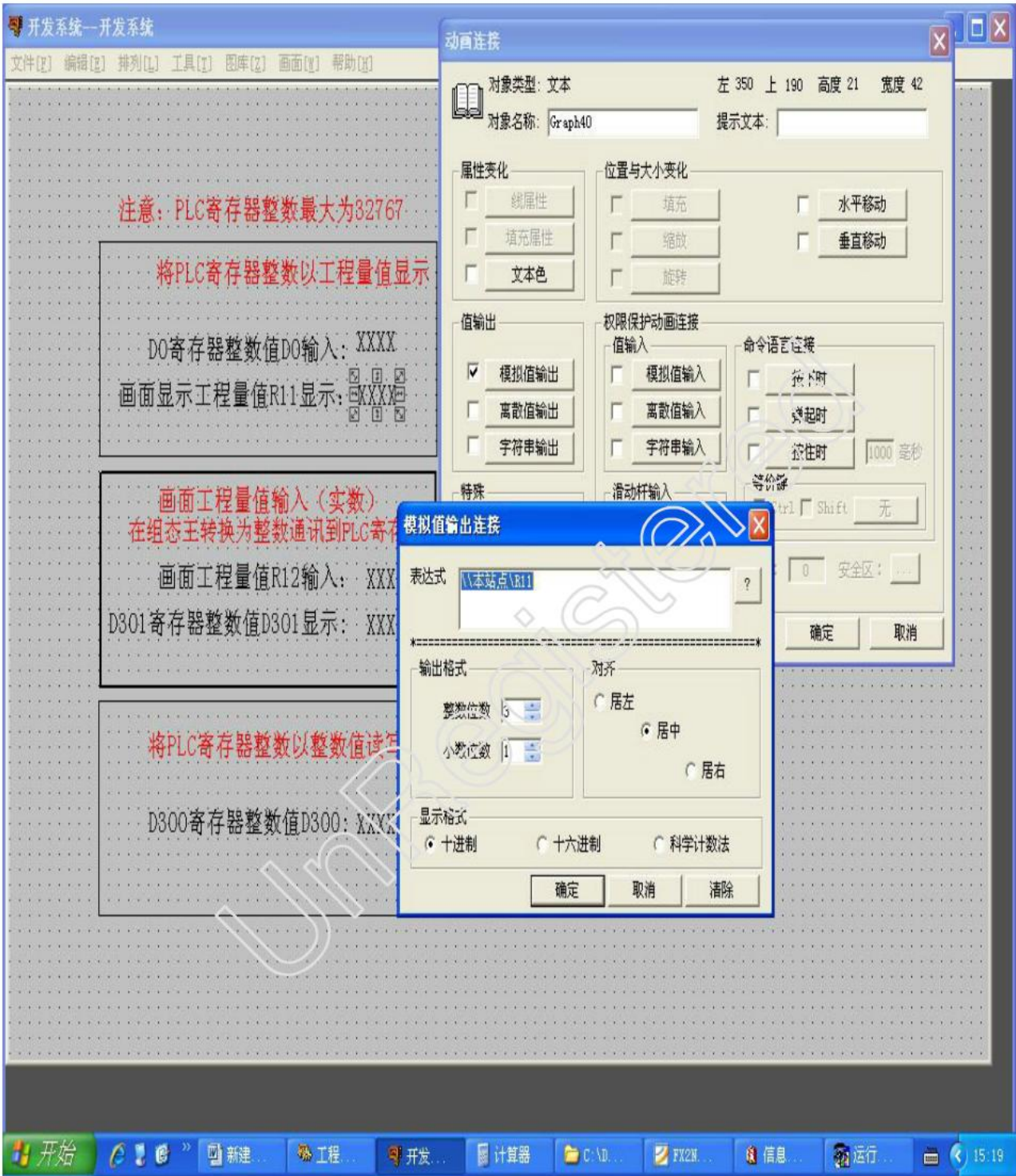
最小原始值: 0 最大原始值: 999999999

连接设备: 采集频率: 1000 毫秒

寄存器: 转换方式:

UnRegistered





15.3

- R11=D00/10; 500MS.

DO 999 R11 999/10=99.9;

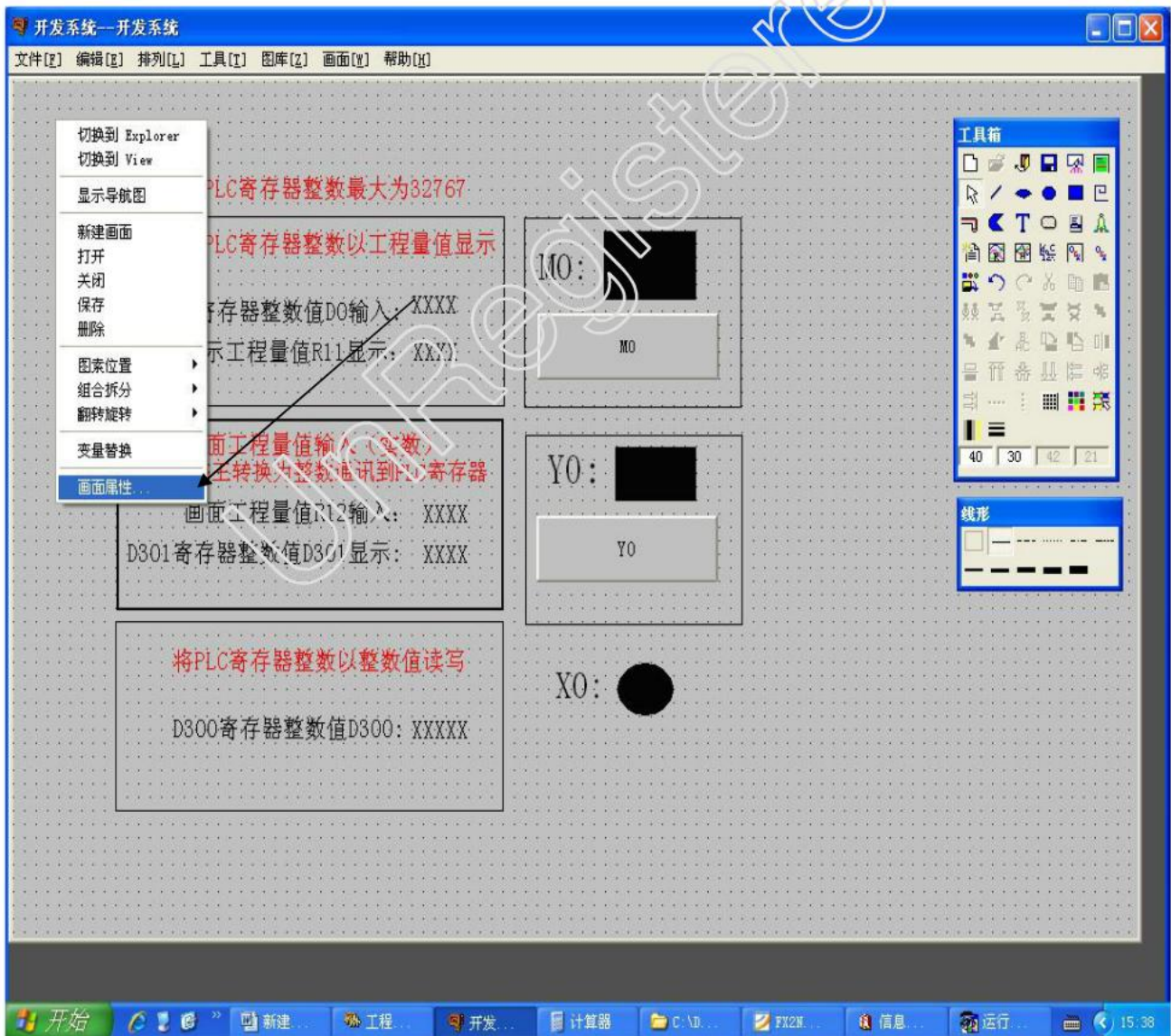
PLC D8030 MOV DO D8030 AD0 PT100

D8030 -599----5999 -59.9-----599.9 D8030

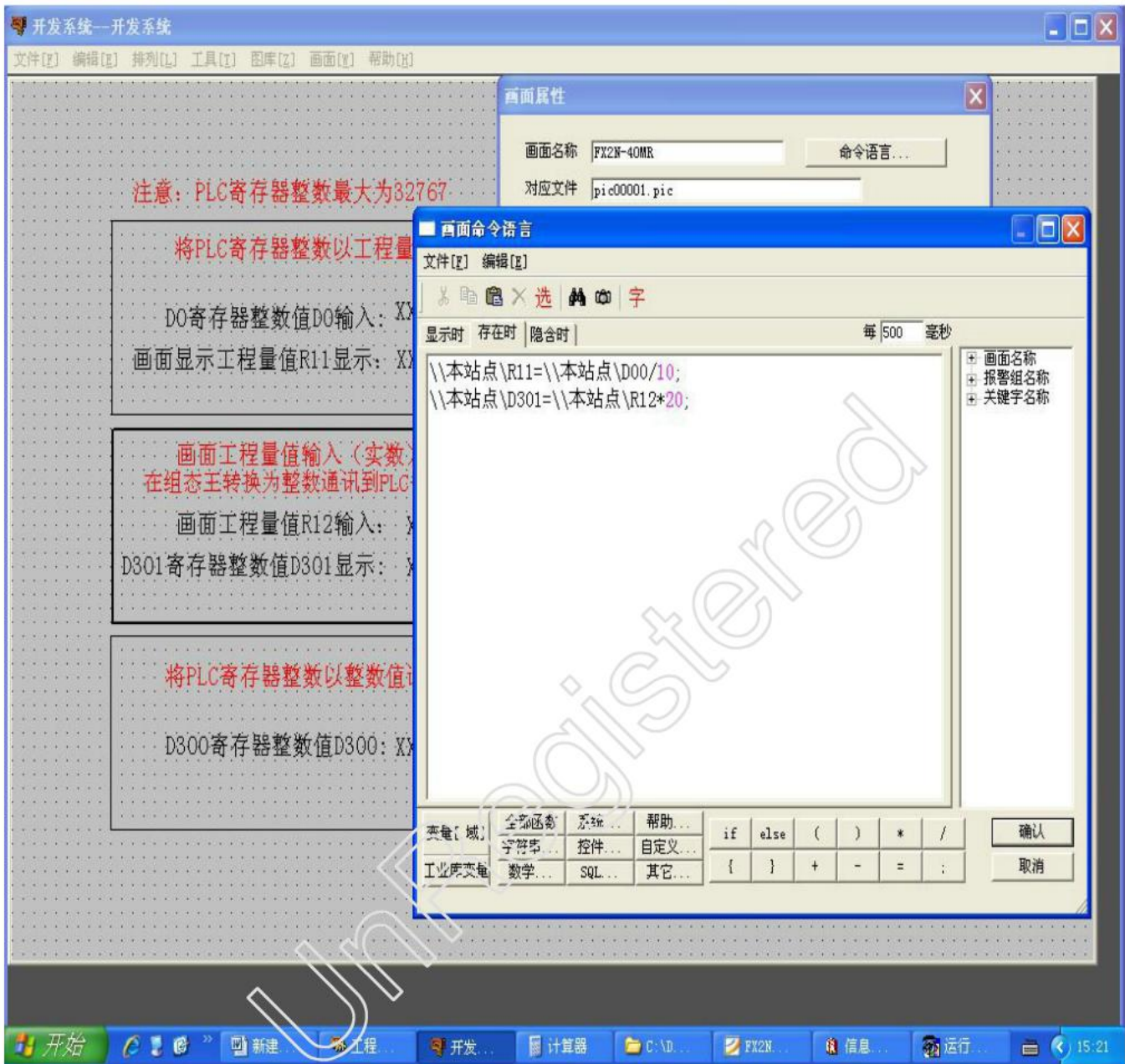
10

PLC 0-10V 0-20MA; D8030 0---4000

0-10V 0-10MPA D8030 400

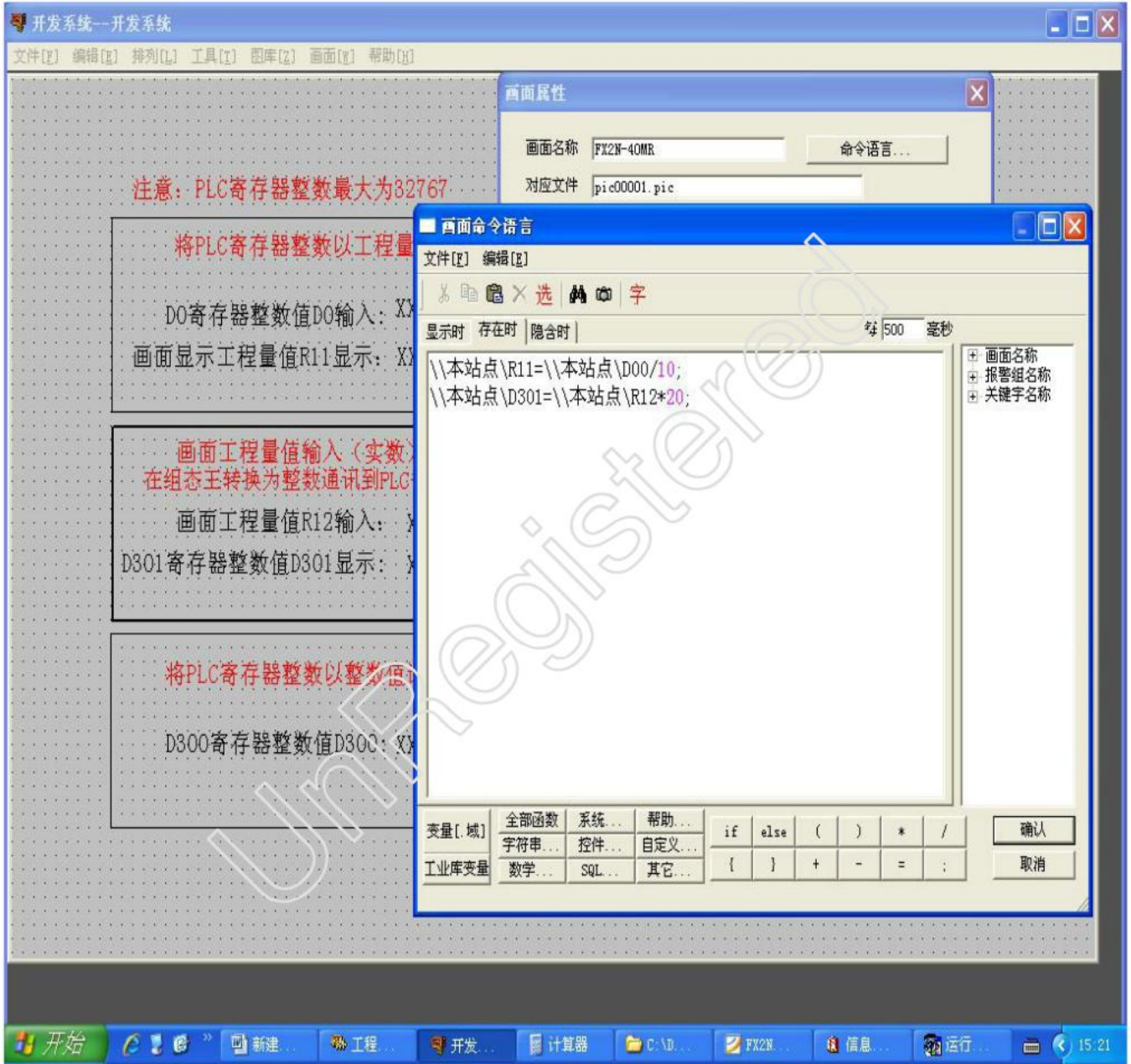


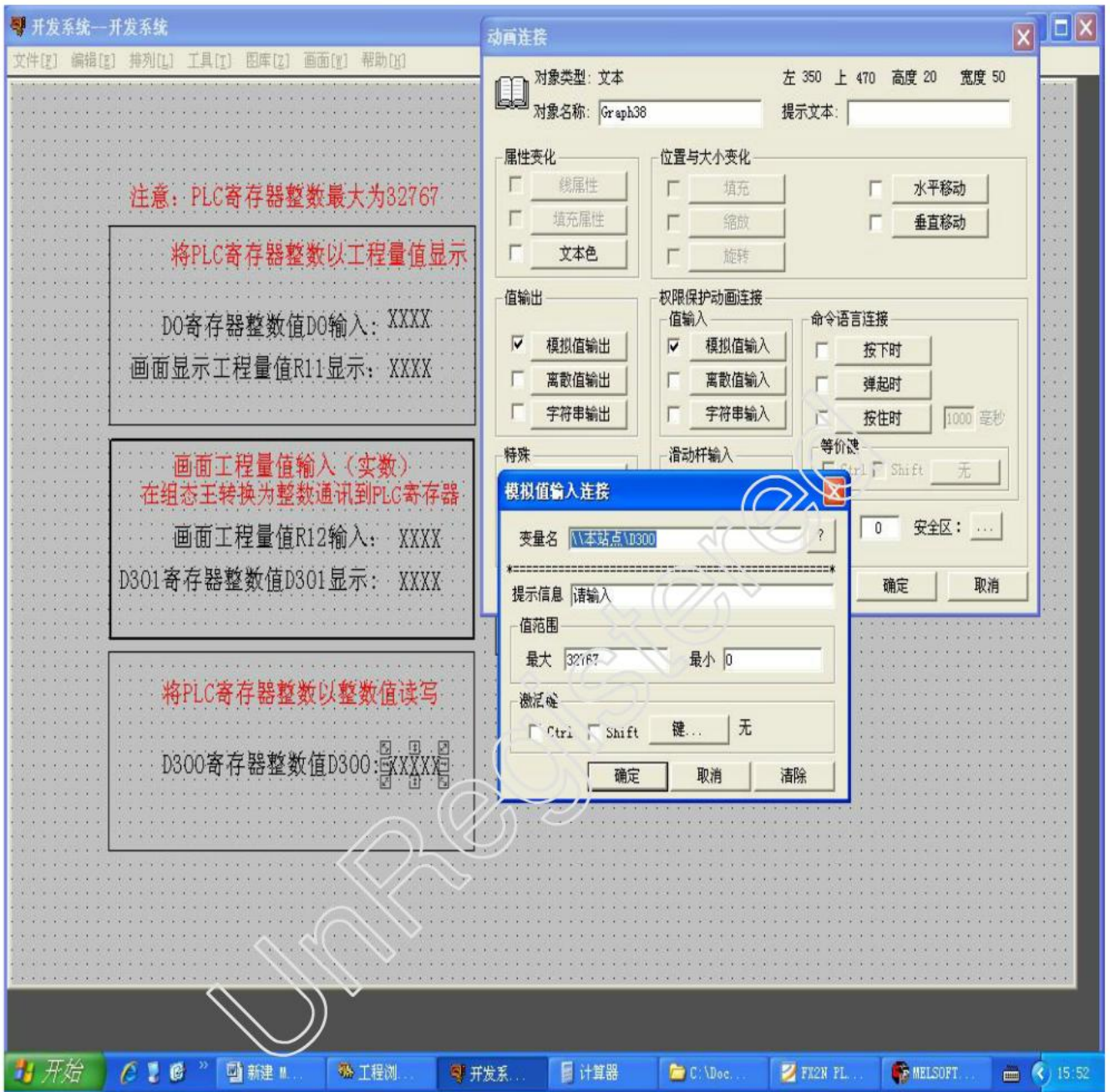
R11=D00/10;

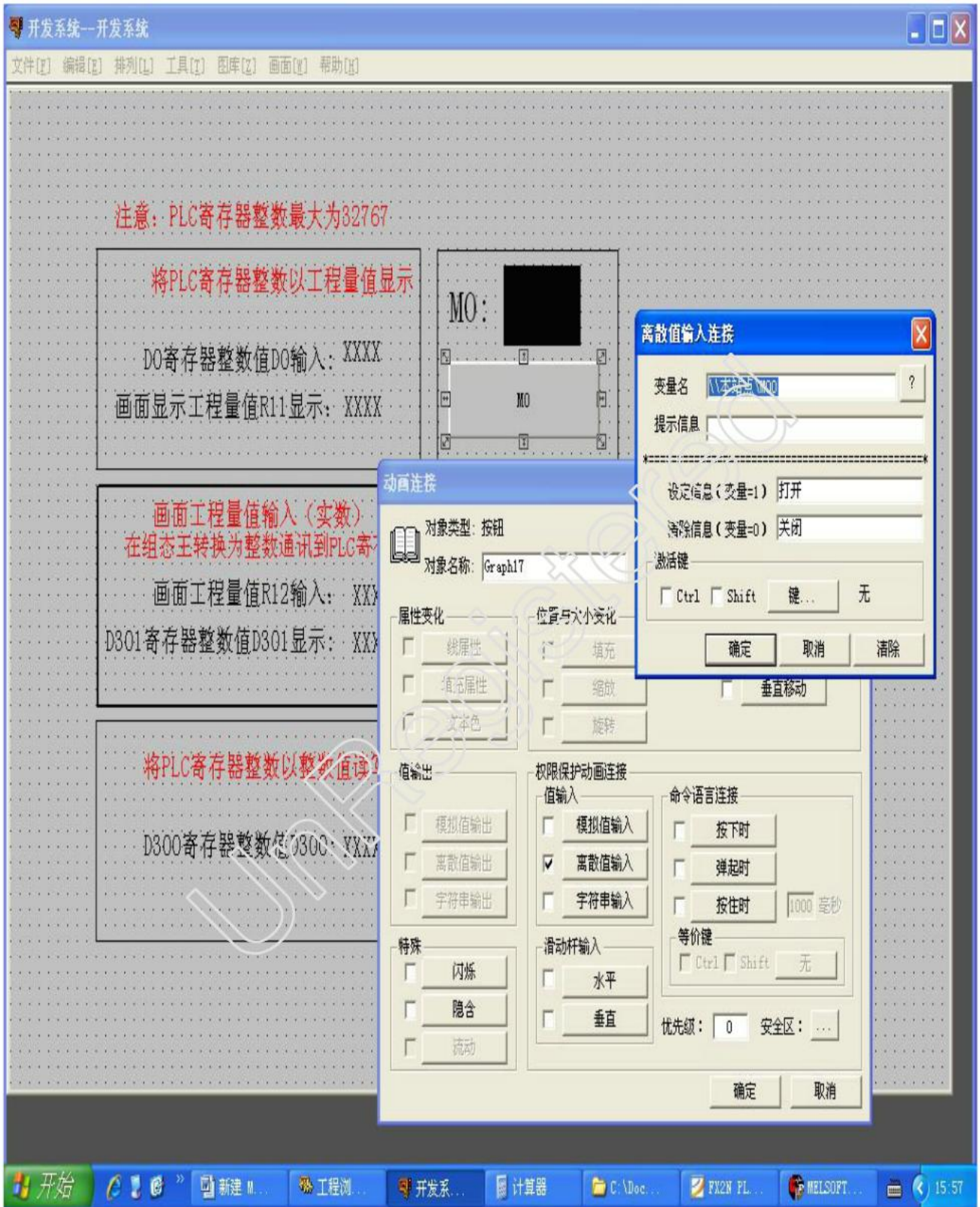


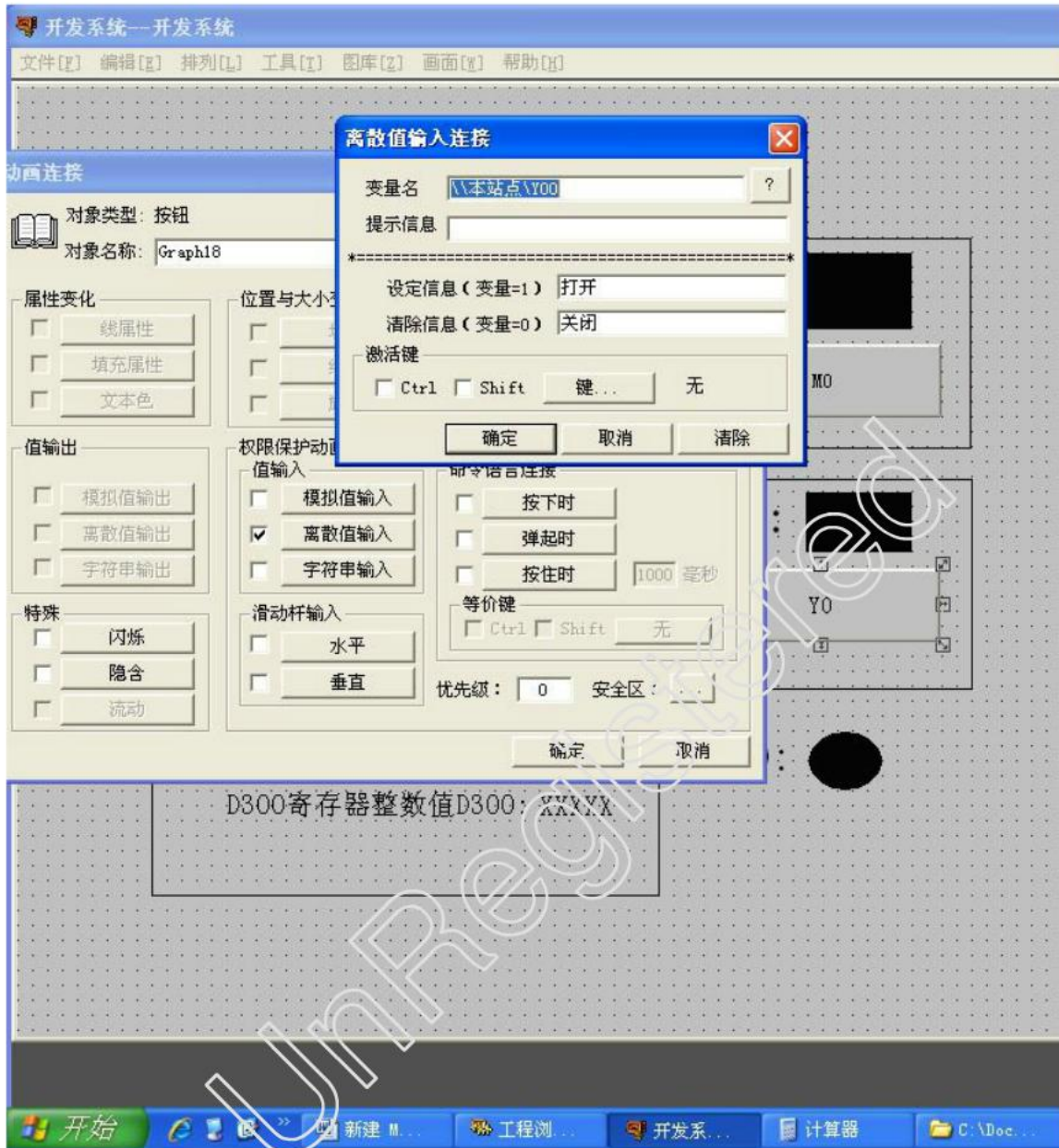
R11

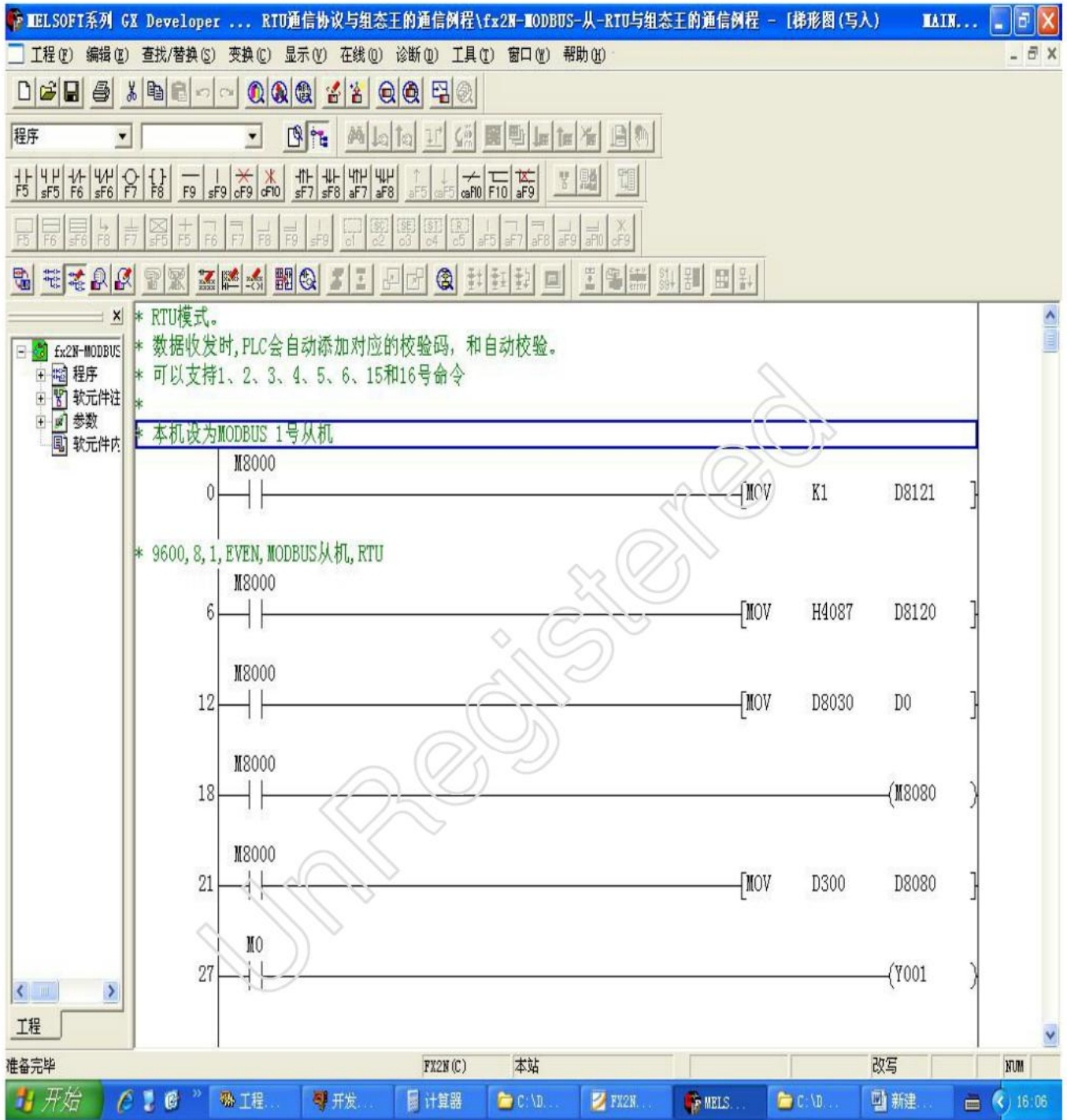
16 R12 , R12 D8080 D8080 PLC DA0
 0-1000 0-10V; DA0 0-10V
 0-50HZ, R12 50.0,D8080 1000 15
 D301=R12*20; PLC D301 MOV D8080; R12=50.0 D8080=50.0*20=1000;











定义变量

基本属性 | 报警定义 | 记录和安全区

变量名: R12

变量类型: 内存实数

描述:

结构成员: 成员类型:

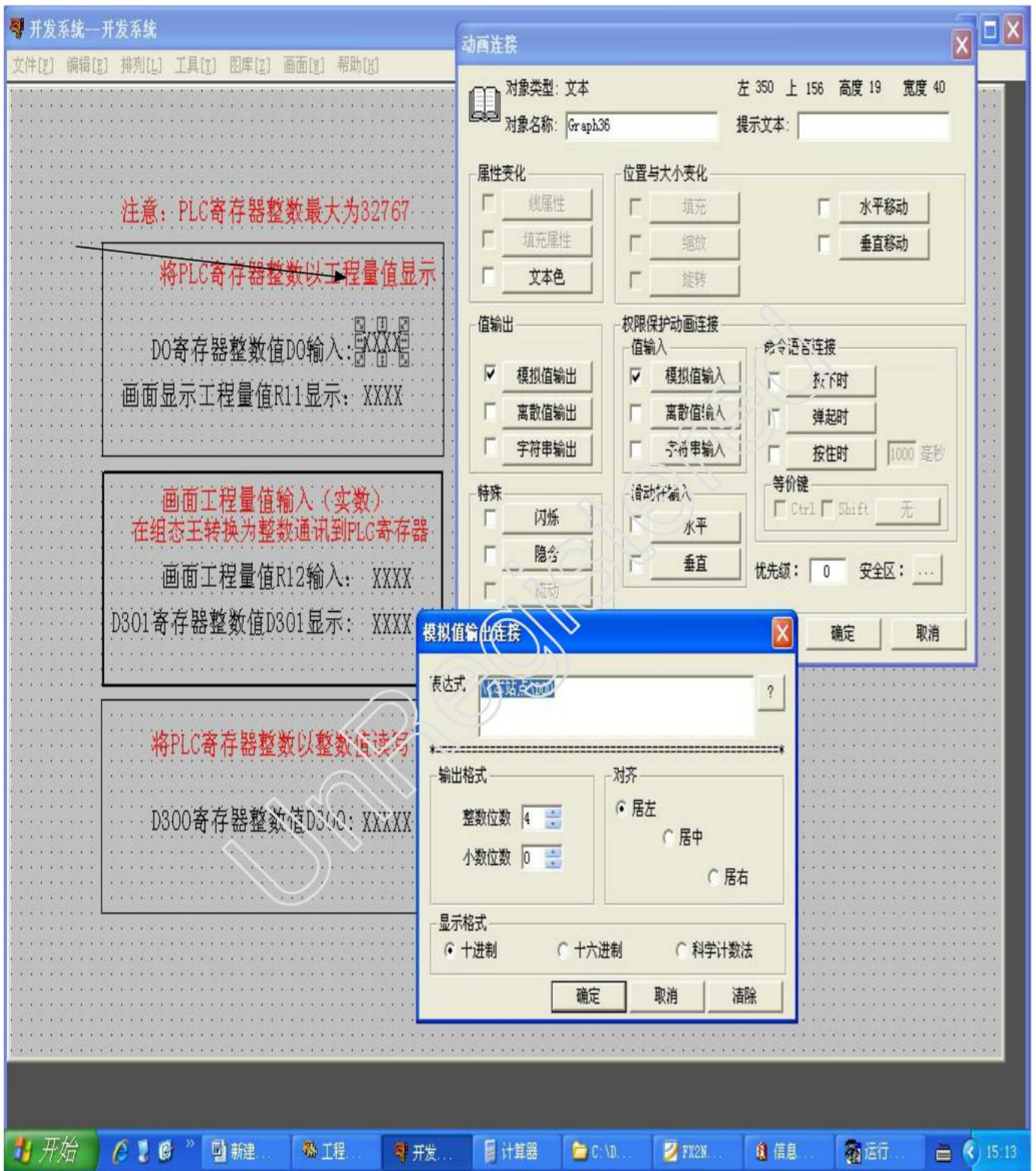
成员描述:

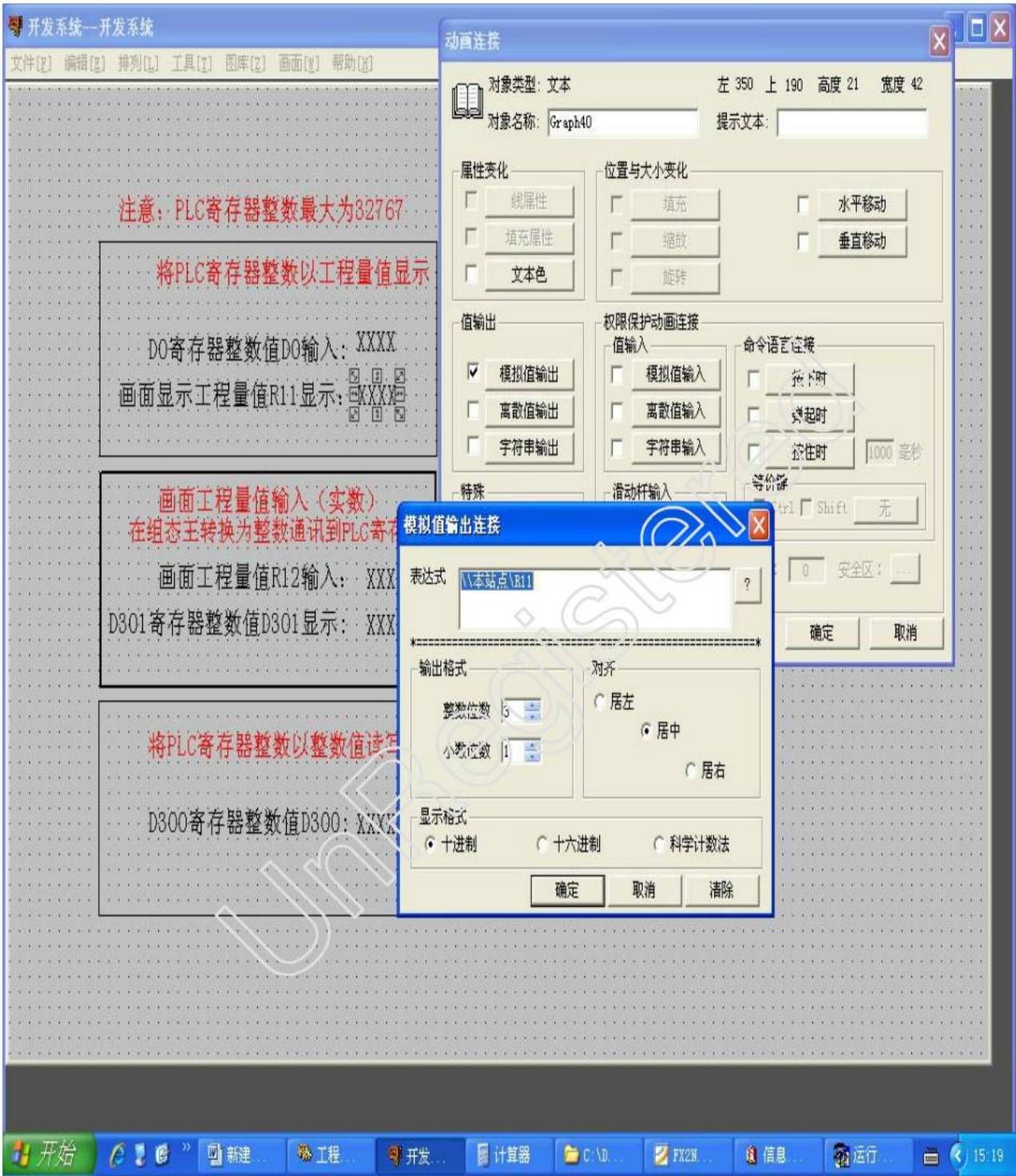
变化灵敏度	0	初始值	0	状态 <input checked="" type="checkbox"/> 保存参数 <input checked="" type="checkbox"/> 保存数值
最小值	0	最大值	50	
最小原始值	0	最大原始值	999999999	

连接设备: 采集频率: 1000 毫秒

寄存器: 转换方式:

UnRegistered





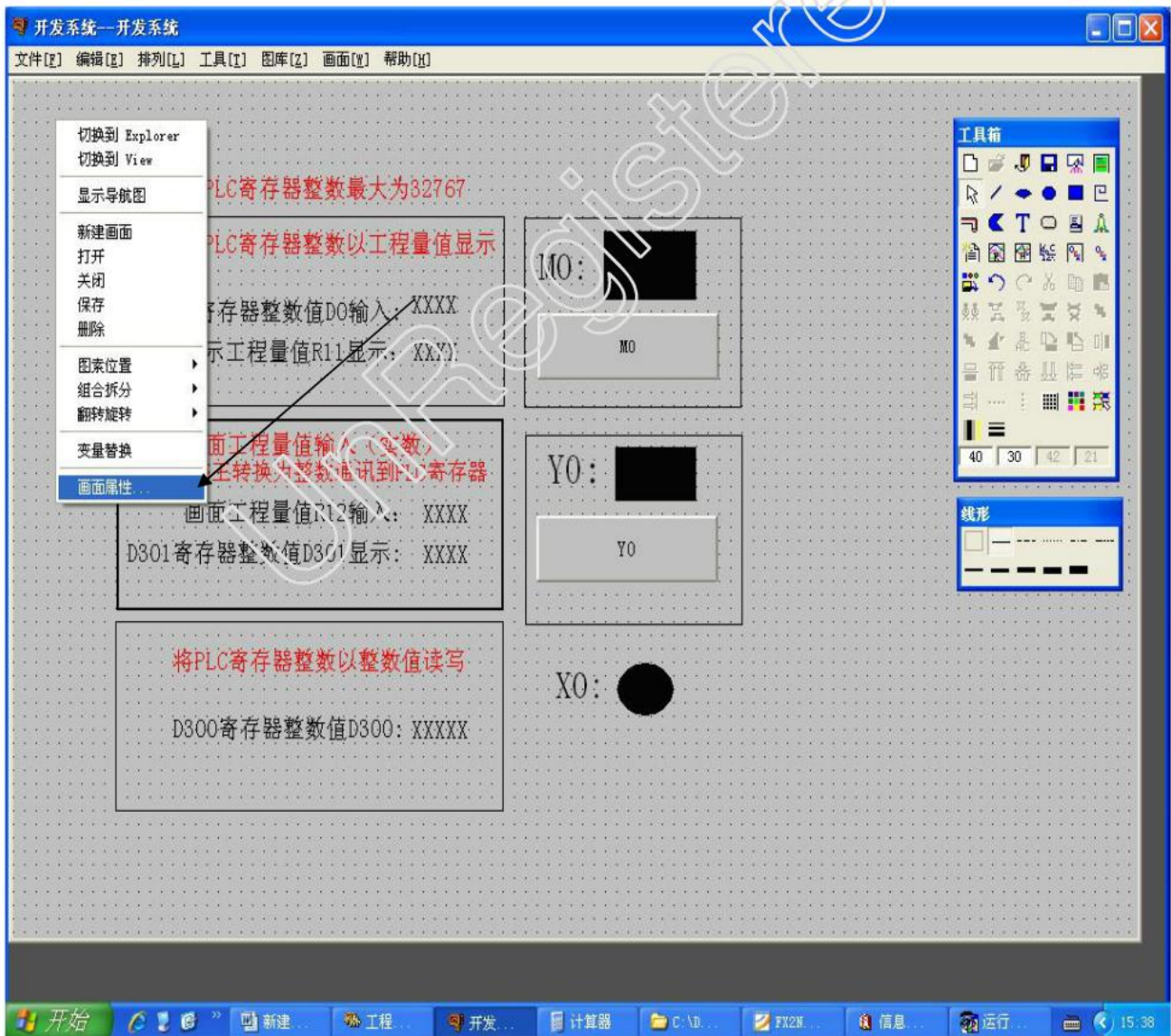
15.3

- R11=D00/10; 500MS.
 DO 999 R11 999/10=99.9;

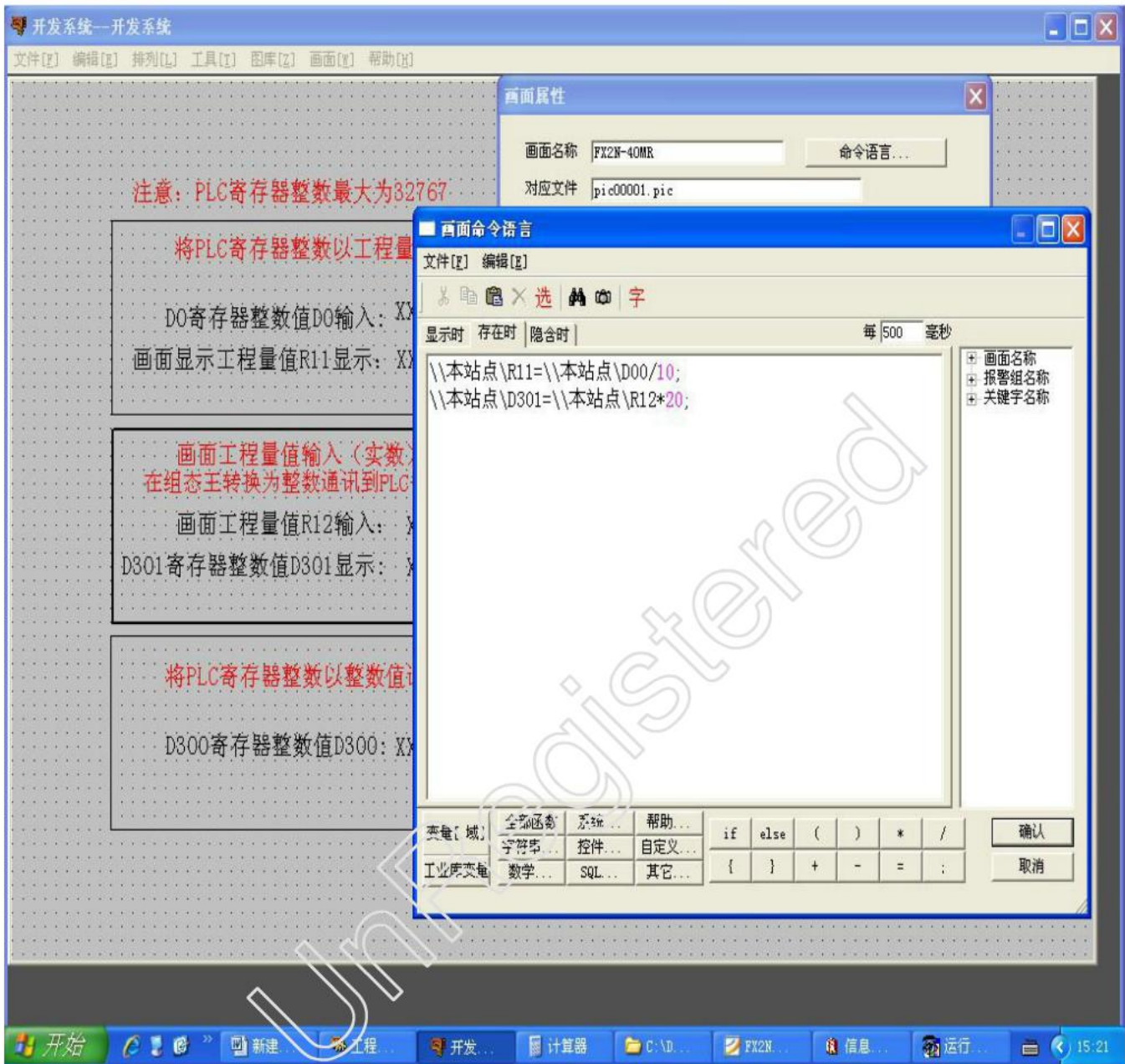
PLC D8030 MOV DO D8030 AD0 PT100
 D8030 -599----5999 -59.9-----599.9 D8030

10

PLC 0-10V 0-20MA; D8030 0---4000
 0-10V 0-10MPA D8030 400



R11=D00/10;



R11

16 R12 , R12 D8080 D8080 PLC DA0
 0-1000 0-10V; DA0 0-10V
 0-50HZ, R12 50.0,D8080 1000 15
 D301=R12*20; PLC D301 MOV D8080; R12=50.0 D8080=50.0*20=1000;

